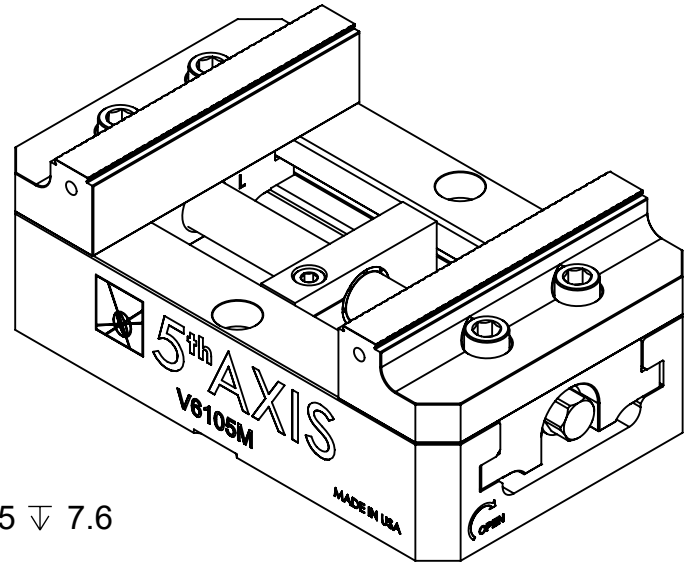


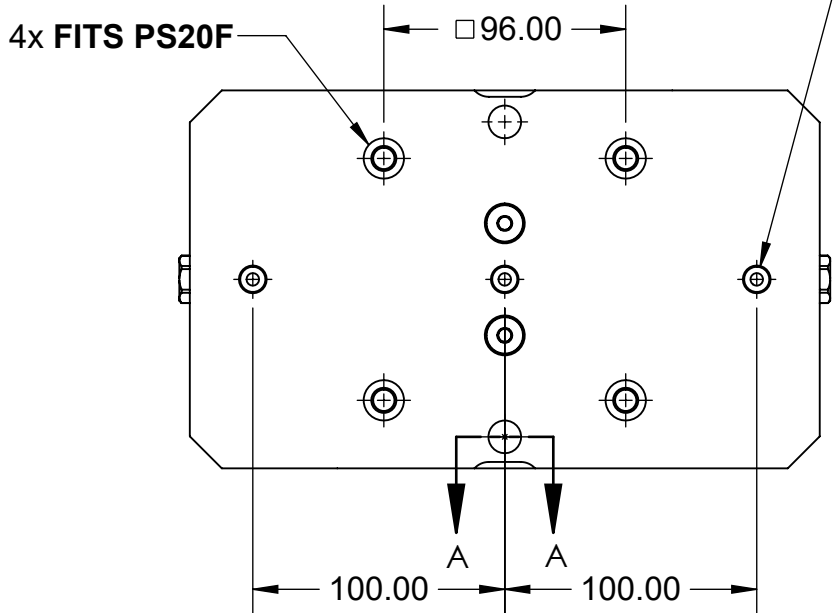
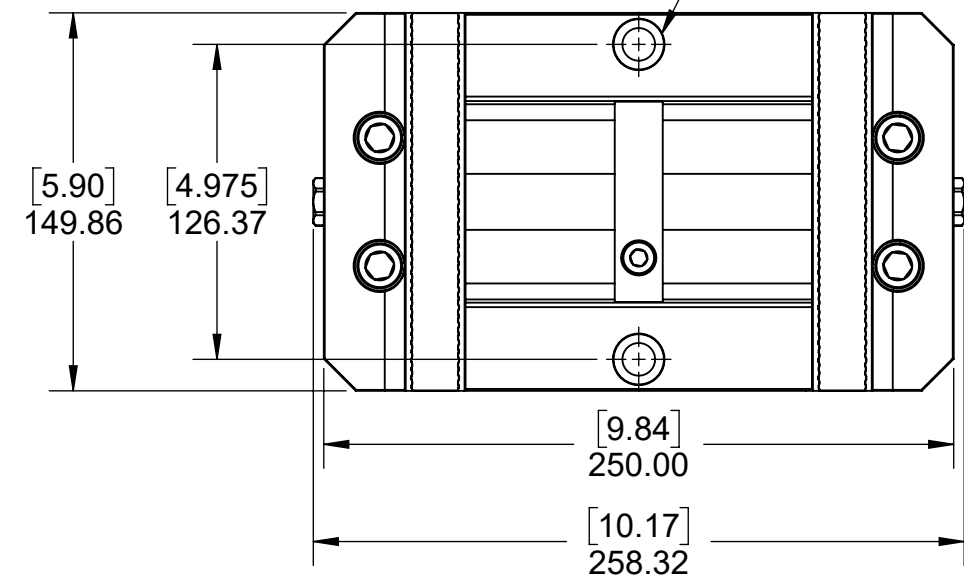
TECHNICAL DATA	V610M
JAW WIDTH	149.86mm
BASE LENGTH	250.00mm
MAXIMUM TORQUE (JAW BOLT)	47.45 Nm
CLAMPING FORCE	26.69kN @ 101.69 Nm
MAXIMUM TORQUE (LEADSCREW)	101.69 Nm
MAXIMUM TORQUE (MOUNTING BOLT)	47.45 Nm
SELF-CENTERING ACCURACY	± 12.7µm

V6105M

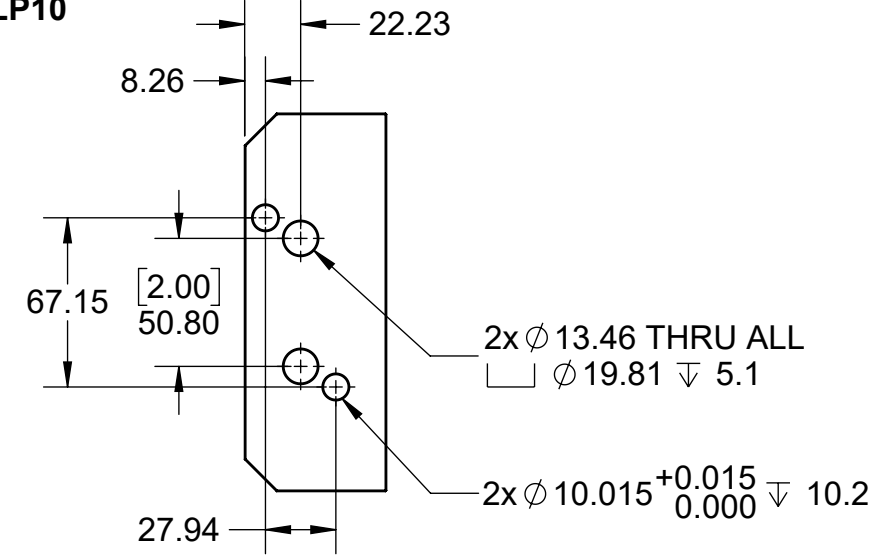


1. ENLARGED COUNTERBORE

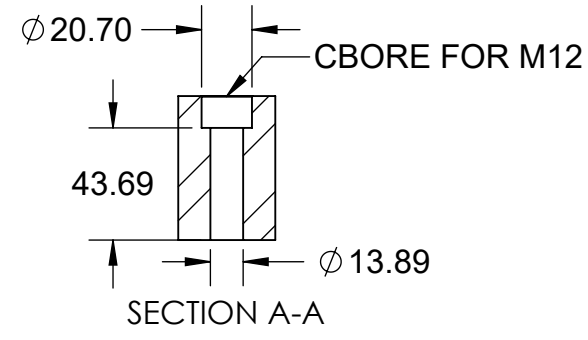
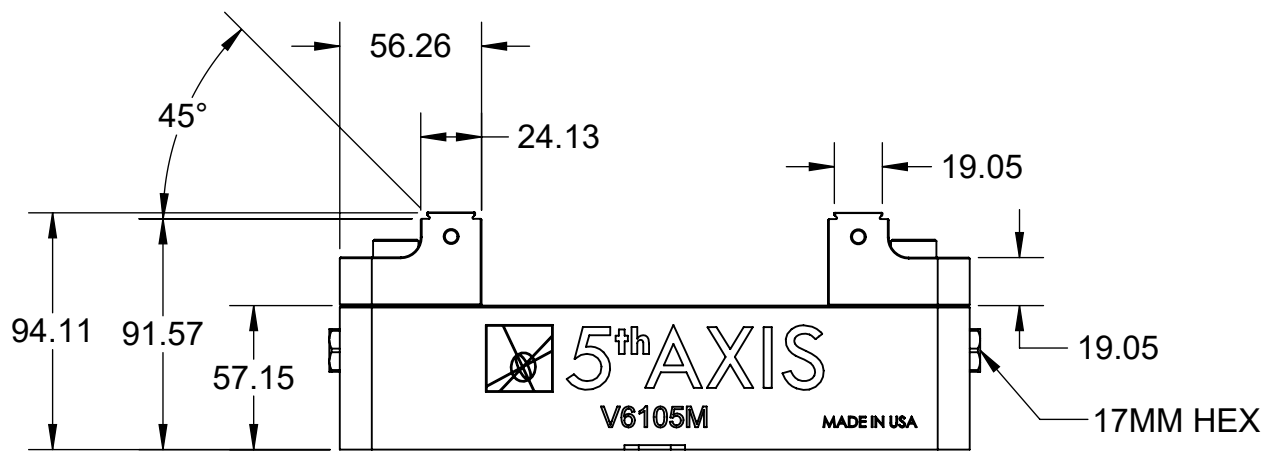
1. COUNTERBORES DESIGNED TO FIT BOTH M12 SHCS AT 125.00MM AND 1/2"-13 SHCS AT 5"



3x $\phi 10.013 \pm 0.005 \nabla 7.6$
M6X1.0 $\nabla 5.1$
FITS LP10



JAW MOUNTING



MILLIMETER <small>DRAWN IN ACCORDANCE WITH ASME Y14.5-2009</small> WWW.5THAXIS.COM 7140 ENGINEER ROAD SAN DIEGO, CA 92111 P (858) 505-0432 F (858) 505-9344	TOLERANCES <small>UNLESS OTHERWISE SPECIFIED</small> x ± 0.1 .xx ± 0.01 .x ± 0.05 .xxx ± 0.005 ANGULAR ± 0.5° <small>THIRD ANGLE PROJECTION</small>			<small>DESCRIPTION</small> SELF-CENTERING VISE		
				<small>SIZE</small> B	<small>PART NO.</small> V6105M	<small>REV</small> A

8

7

6

5

4

3

2

1

D

D

V6105M

C

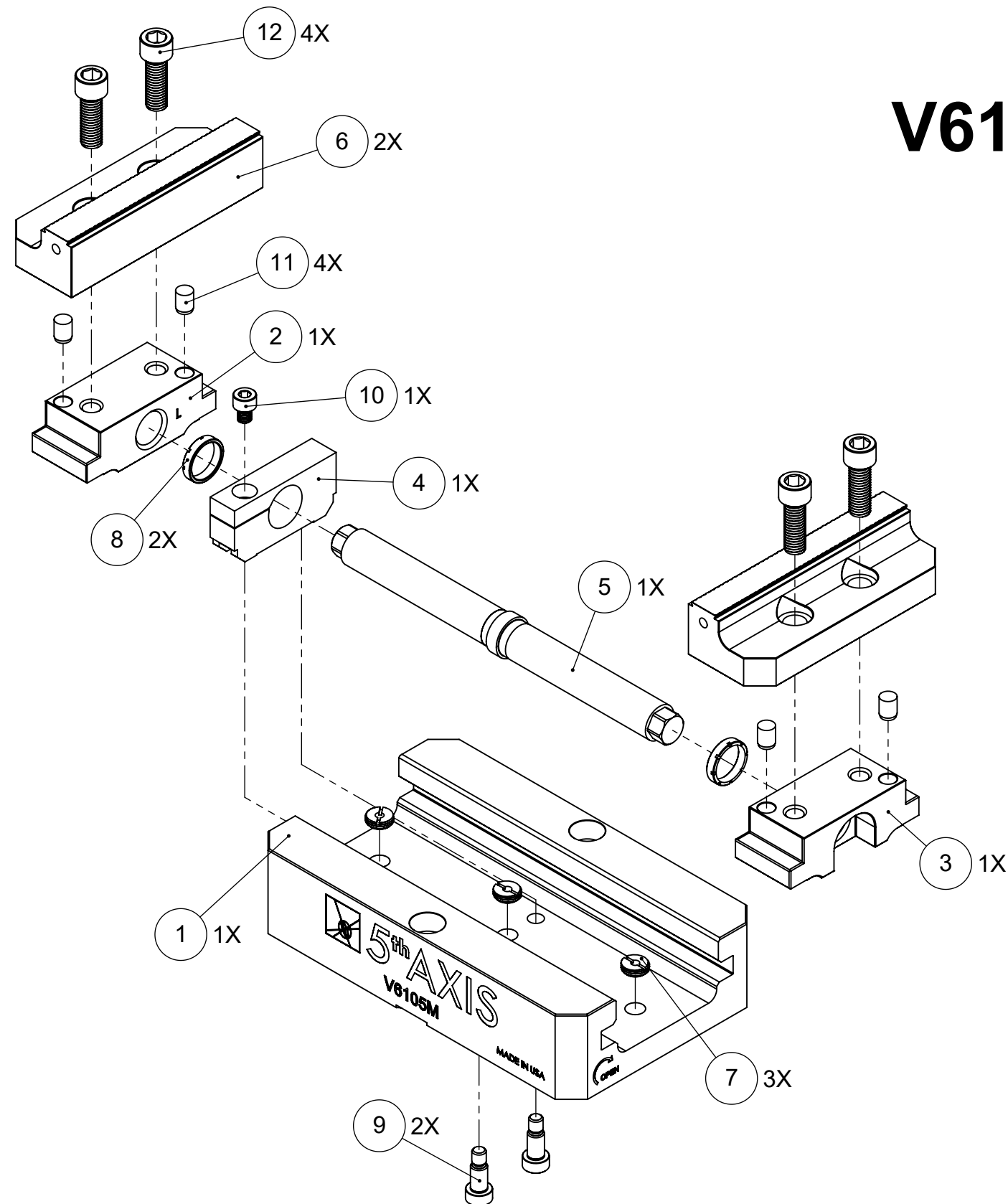
C

B

B

A

A



ITEM NO.	PART NUMBER	DESCRIPTION	QTY.
1	V6105M-1	BASE	1
2	V6105M-2L	LEFT TRUCK	1
3	V6105M-2R	RIGHT TRUCK	1
4	V6105MX-3	CENTER BLOCK	1
5	V6105M-4	LEAD SCREW	1
6	V6105M-5	JAW	2
7	TIM-58	THREADED INSERT	3
8	V6105-6	CENTER BLOCK RING	2
9	SB6VX	SHOULDER BOLT	2
10	91290A414	SOCKET HEAD CAP SCREW	1
11	M10X16.DP	DOWEL PIN, M10 X 16mm	4
12	91290A620	SOCKET HEAD CAP SCREW	4
13	ANTI-SEIZE	ANTI-SEIZE (NOT SHOWN)	1
14	LP10	LOCATING PIN (NOT SHOWN)	2
15	TS17	THUMB SCREW (NOT SHOWN)	1

FOR REFERENCE ONLY - NOT FOR RESALE

MILLIMETER

DRAWN IN ACCORDANCE WITH
ASME Y14.5-2009

WWW.5THAXIS.COM

7140 ENGINEER ROAD
SAN DIEGO, CA 92111

P (858) 505-0432
F (858) 505-9344

TOLERANCES

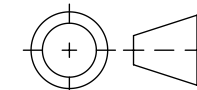
UNLESS OTHERWISE SPECIFIED

x ± 0.1 .xx ± 0.01

.x ± 0.05 .xxx ± 0.005

ANGULAR ± 0.5°

THIRD ANGLE PROJECTION



DESCRIPTION

SELF-CENTERING VISE

SIZE

B

PART NO.

V6105M

REV

A

DO NOT SCALE DRAWING

SCALE 1:3

WEIGHT:

SHEET 2 OF 3

8

7

6

5

4

3

2

1

8

7

6

5

4

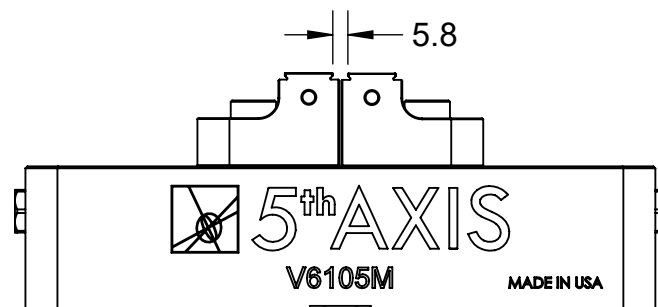
3

2

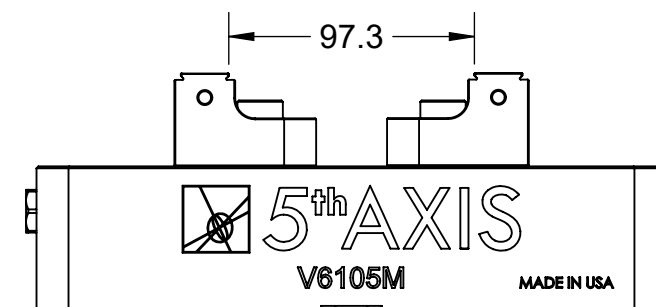
1

NOTE: USING DOVETAIL ALLOWS VISE TO CLAMP LARGER PART.
BELOW CLAMPING RANGE ONLY SHOWS THE CAPABILITY OF THE GRIPPER TEETH.

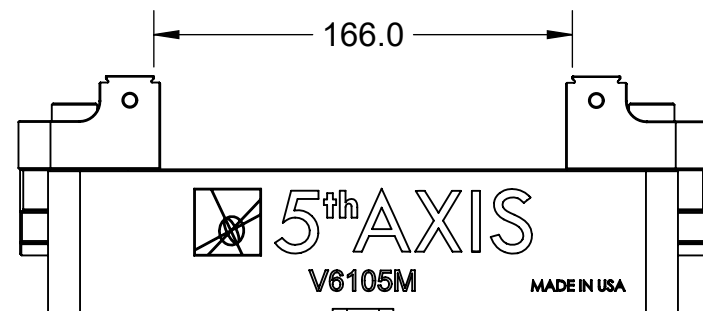
V6105M



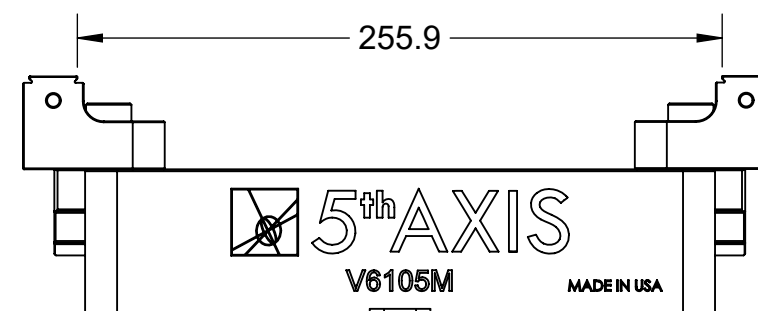
FORWARD JAWS (MINIMUM CLAMPING RANGE)




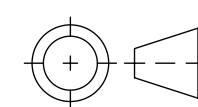
REVERSE JAWS (MINIMUM CLAMPING RANGE)



FORWARD JAWS (MAXIMUM CLAMPING RANGE)



REVERSE JAWS (MAXIMUM CLAMPING RANGE)

MILLIMETER <small>DRAWN IN ACCORDANCE WITH ASME Y14.5-2009</small>	TOLERANCES <small>UNLESS OTHERWISE SPECIFIED</small> x ± 0.1 .xx ± 0.01 .x ± 0.05 .xxx ± 0.005 ANGULAR ± 0.5° <small>THIRD ANGLE PROJECTION</small>			
		DESCRIPTION SELF-CENTERING VISE		
WWW.5THAXIS.COM 7140 ENGINEER ROAD SAN DIEGO, CA 92111 P (858) 505-0432 F (858) 505-9344		SIZE B	PART NO. V6105M	REV A
DO NOT SCALE DRAWING		SCALE 1:2	WEIGHT:	SHEET 3 OF 3

8

7

6

5

4

3

2

1