

8

7

6

5

4

3

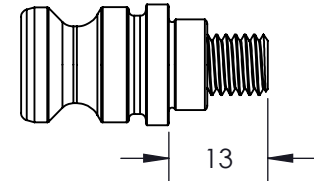
2

1

D

D

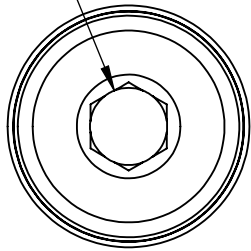
PS16F



SHOWN WITH SUPPLIED M8X1.25 x 25MM SET SCREW INSTALLED

INTERFACES WITH 5TH AXIS ROCKLOCK SYSTEM

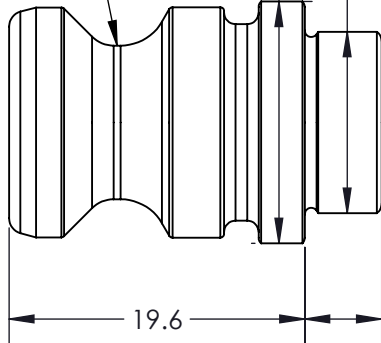
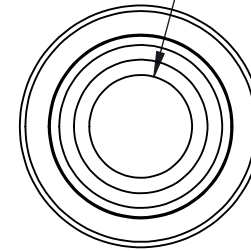
5MM HEX



$\varnothing 15.997 \pm 0.005$

$\varnothing 11.991 \pm 0.005$

M8X1.25 ∇ 11.4 FOR USE WITH CUP POINT SET SCREW OR SHCS



ALSO COMPATIBLE WITH OTHER 52MM TOP TOOLING

B

B

A

A

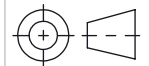
MILLIMETER TOLERANCES
UNLESS OTHERWISE SPECIFIED

DRAWN IN ACCORDANCE WITH ASME Y14.5-2009	X ± 0.1	.XX ± 0.01
	X ± 0.05	.XXX ± 0.005
	ANGULAR ± 0.5°	

PROPRIETARY AND CONFIDENTIAL

THE INFORMATION CONTAINED IN THIS DRAWING IS THE SOLE PROPERTY OF FIFTH AXIS, INC. ANY REPRODUCTION IN PART OR AS A WHOLE WITHOUT THE WRITTEN PERMISSION OF FIFTH AXIS, INC. IS PROHIBITED.

THIRD ANGLE PROJECTION



5th AXIS
www.5thaxis.com
7140 ENGINEER ROAD
SAN DIEGO, CA 92111
P (858) 505-0432 F (858) 505-9344

DESCRIPTION	PULL STUD FOR ROCKLOCK 52MM SYSTEM		
SIZE	PART NO.	PS16F	
DO NOT SCALE DRAWING	SCALE 1:1	WEIGHT: 0.125 LBS	SHEET 1 OF 1

8

7

6

5

4

3

2

1